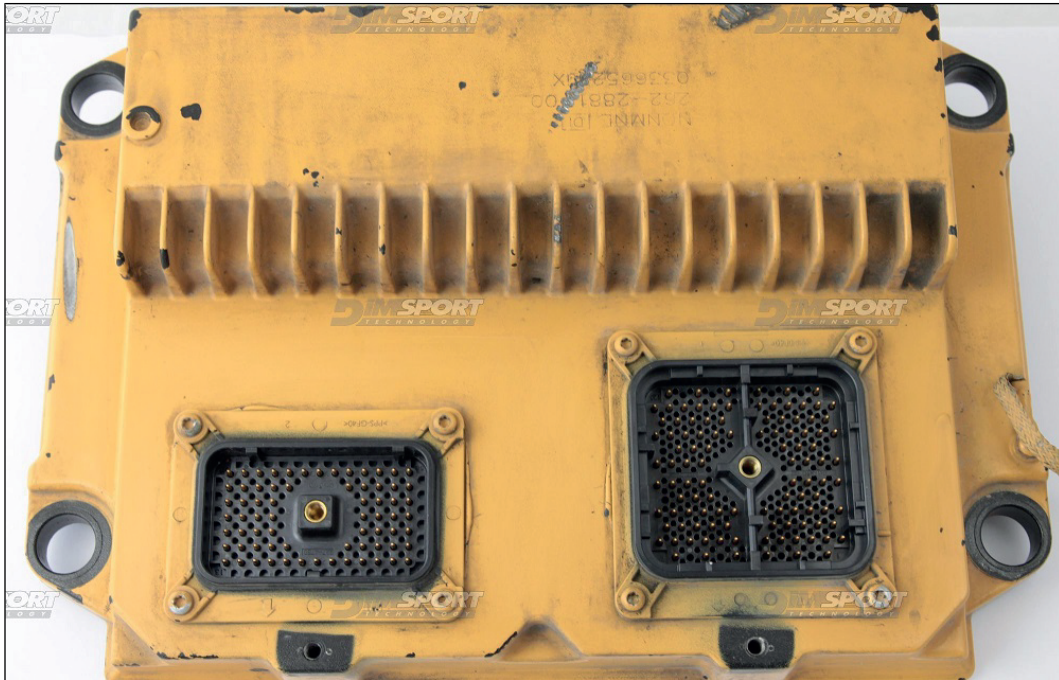
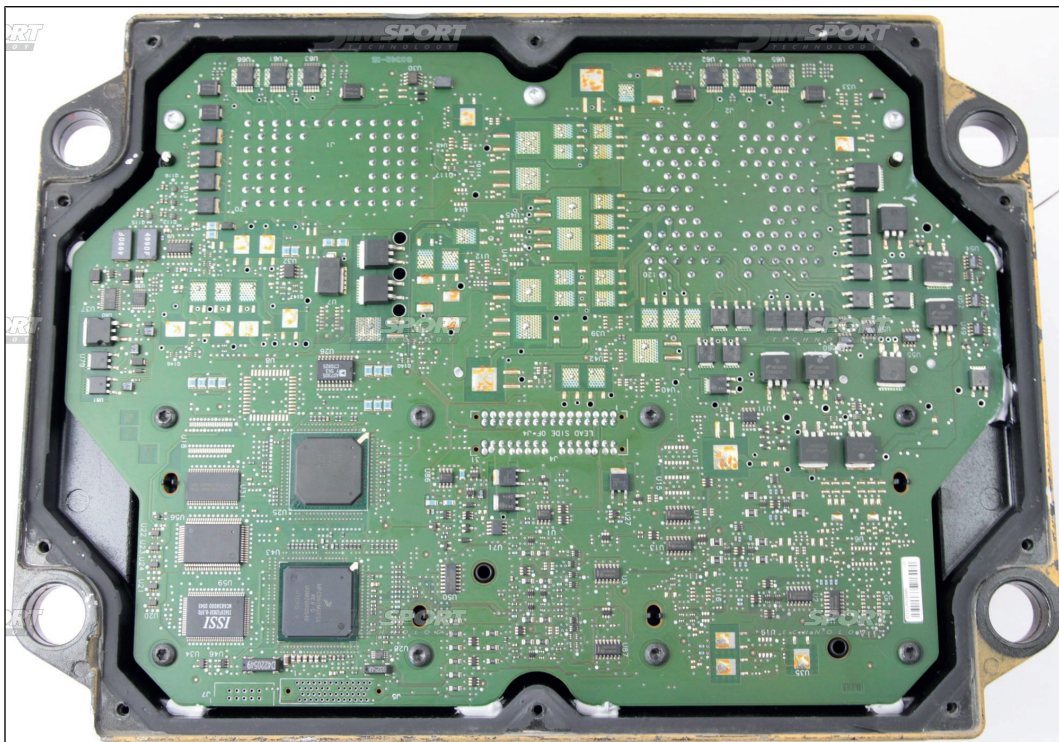


1 CAT ADEM IV CATERPILLAR

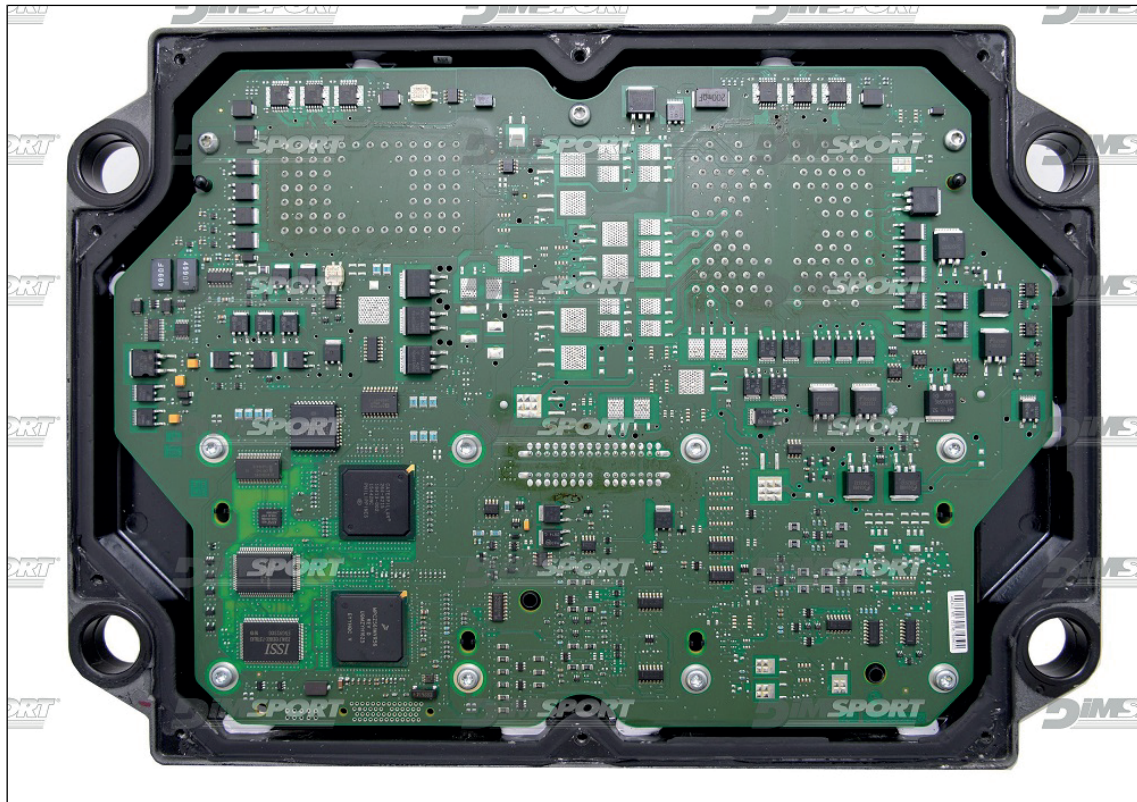
1.1 PLUGIN 0332: NEW TRASDATA



TYPE 1



TYPE 2



! ATTENTION

Due to the high current absorption, we suggest to feed the ECU with an external power supply or a car battery.

Connect the power cable F32GN003 to the NEW TRASDATA and then to the power source.

The ECU must be powered through the NEW TRASDATA using the F32GN037C/D cable.



Adapter F34NTA03

