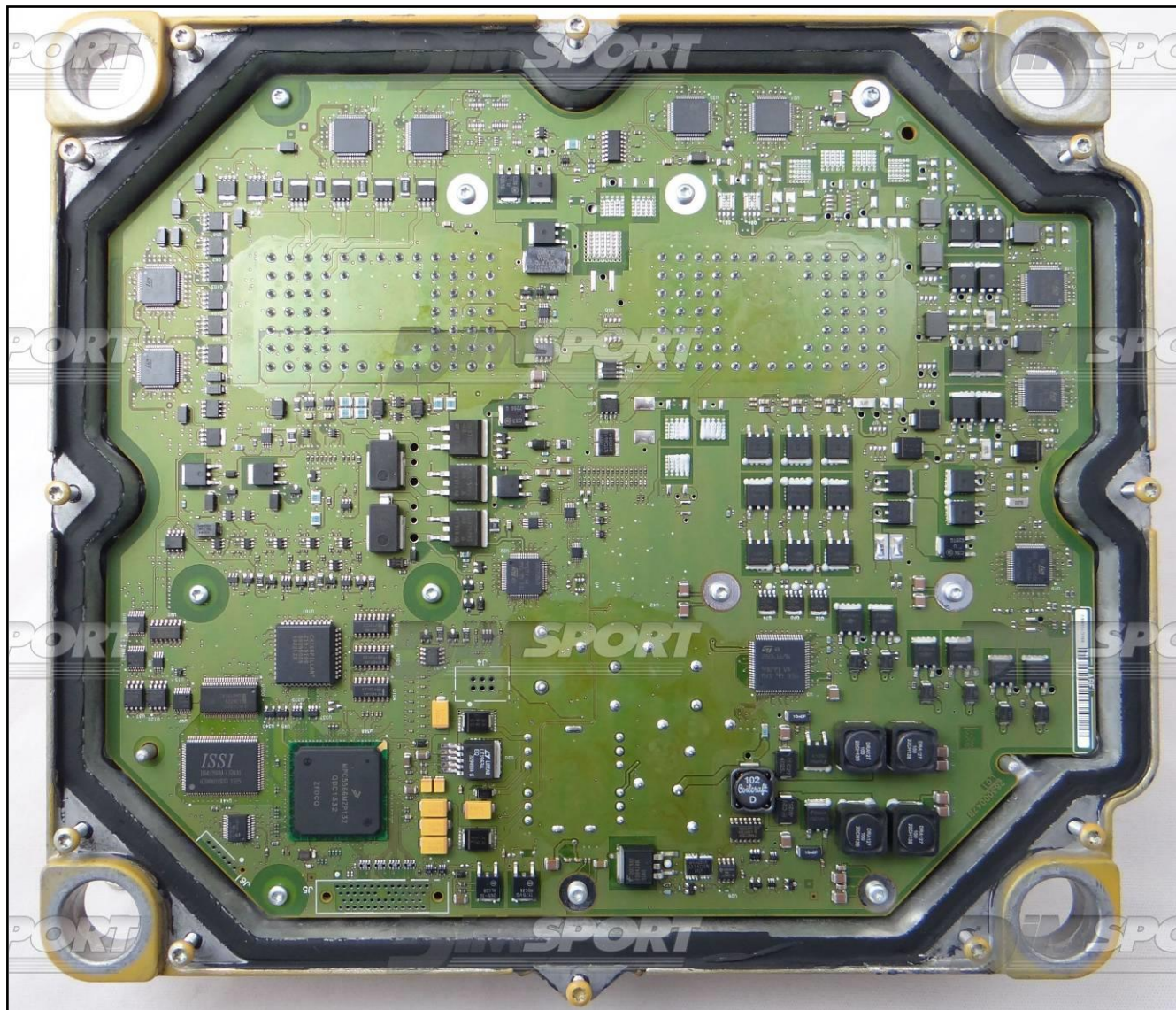


PLUGIN 704 : NEW TRASDATA

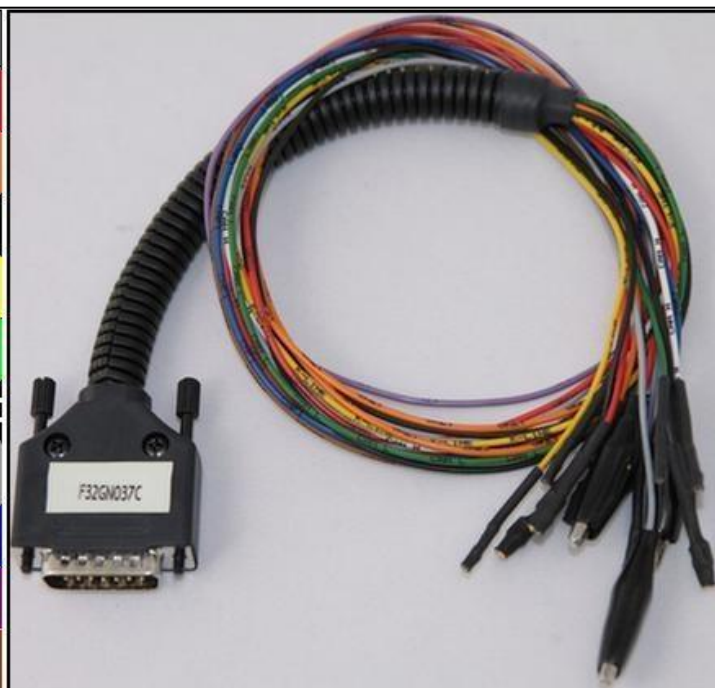




DIRECT CONNECTION

In order to connect to the ECU use the CABLE F32GN037C/D.
 Make sure that the POWER led (red) on NEW TRASDATA is ON.

COLORE FILO WIRE COLOUR	DESCRIZIONE DESCRIPTION
ROSSO RED	POSITIVO DIRETTO POWER BATTERY
ARANCIO ORANGE	POSITIVO SOTTO QUADRO POWER SWITCH ON
NERO BLACK	MASSA GND
GIALLO YELLOW	KLINE
VERDE GREEN	CAN LOW
BIANCO WHITE	CAN HIGH
GRIGIO GREY	POL4 BOOT
BLU BLUE	POL5 CNF1
VIOLA/GRIGIO PURPLE/GREY	TENSIONE PROG. PROG. VOLTAGE
MARRONE BROWN	RESET



Due to the relevant power absorbed by the ECU at the beginning of the communication it is necessary to feed the ECU with an external power supply or a car battery. Connect the power cable F32GN003 to the New Trasdata and then to the power source.
 The ECU must be powered through the New Trasdata using the F32GN037C/D cable.



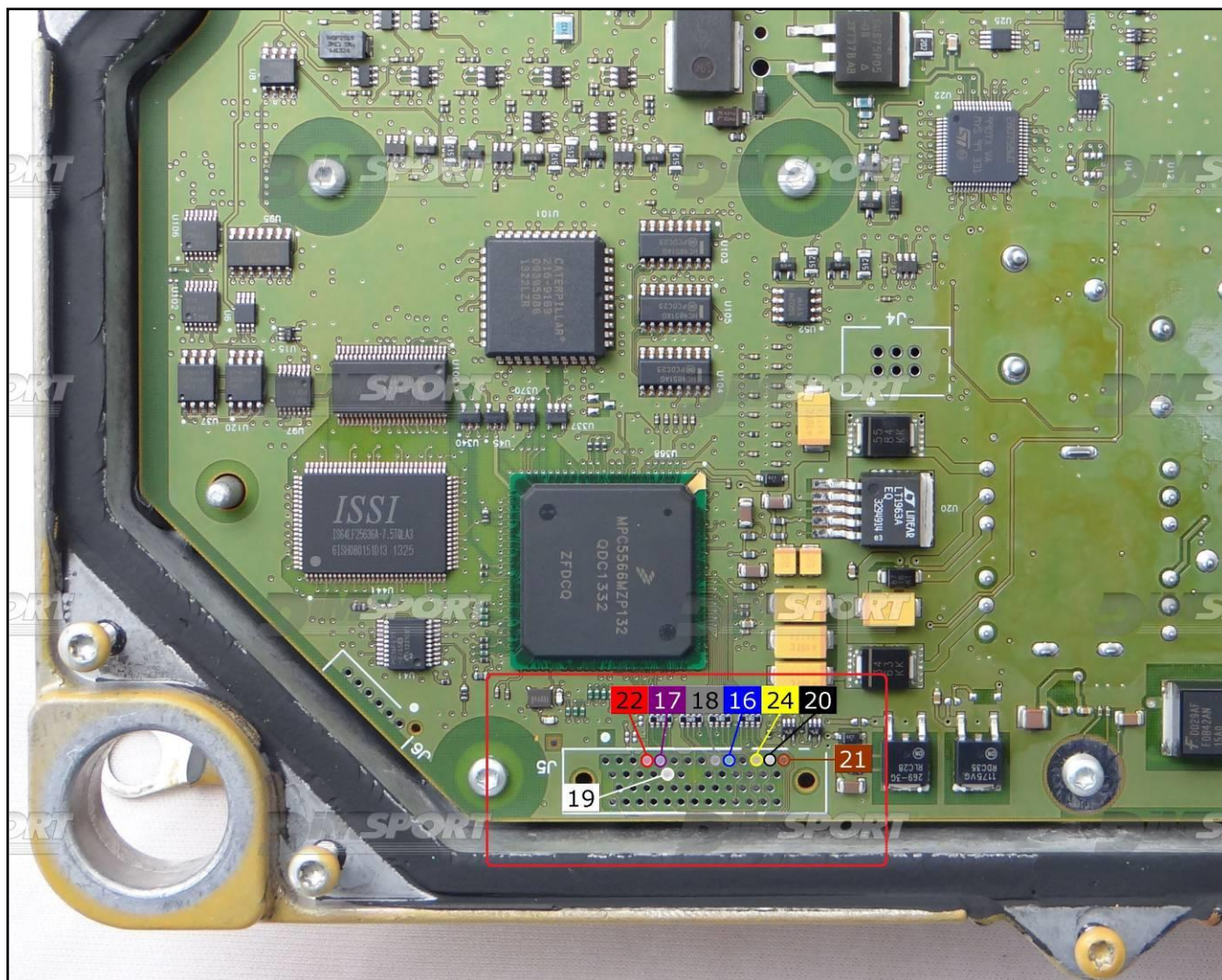
ECU CONNECTOR



J-TAG CONNECTION

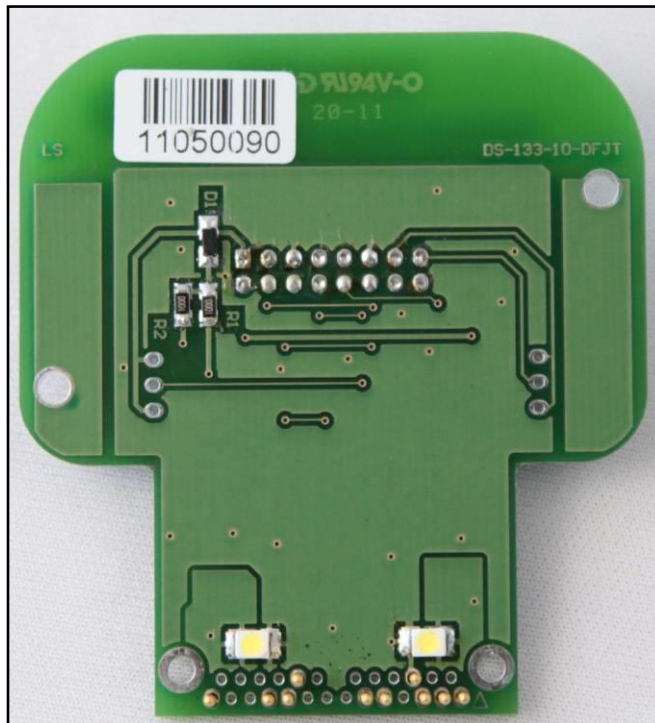
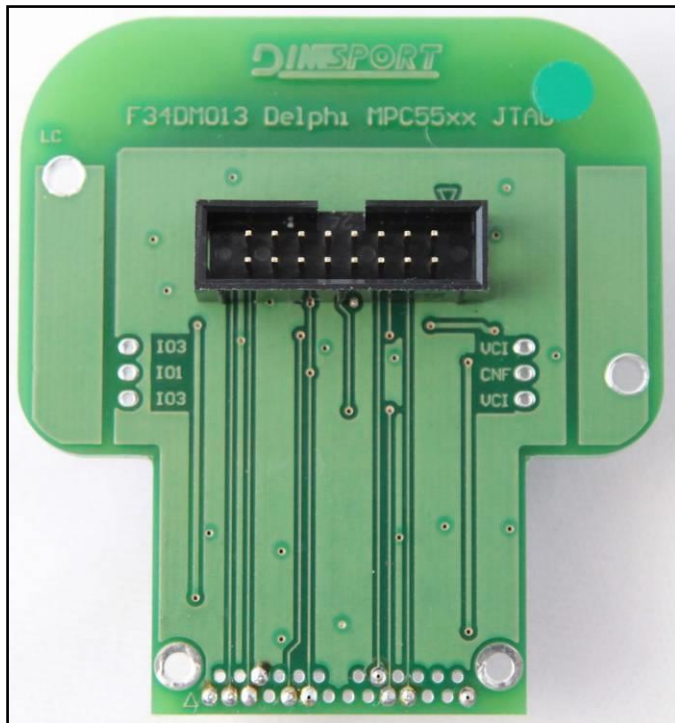
Connect the FLAT cable F34NTF53 as shown here below:

Pin	Colore Colour
11	Non usato Not used
12	Non usato Not used
13	Non usato Not used
14	Non usato Not used
15	Non usato Not used
16	Blu Blue
17	Viola Violet
18	Grigio Grey
19	Bianco White
20	Nero Black
21	Marrone Brown
22	Rosso Red
23	Non usato Not used
24	Giallo Yellow
25	Non usato Not used
26	Non usato Not used

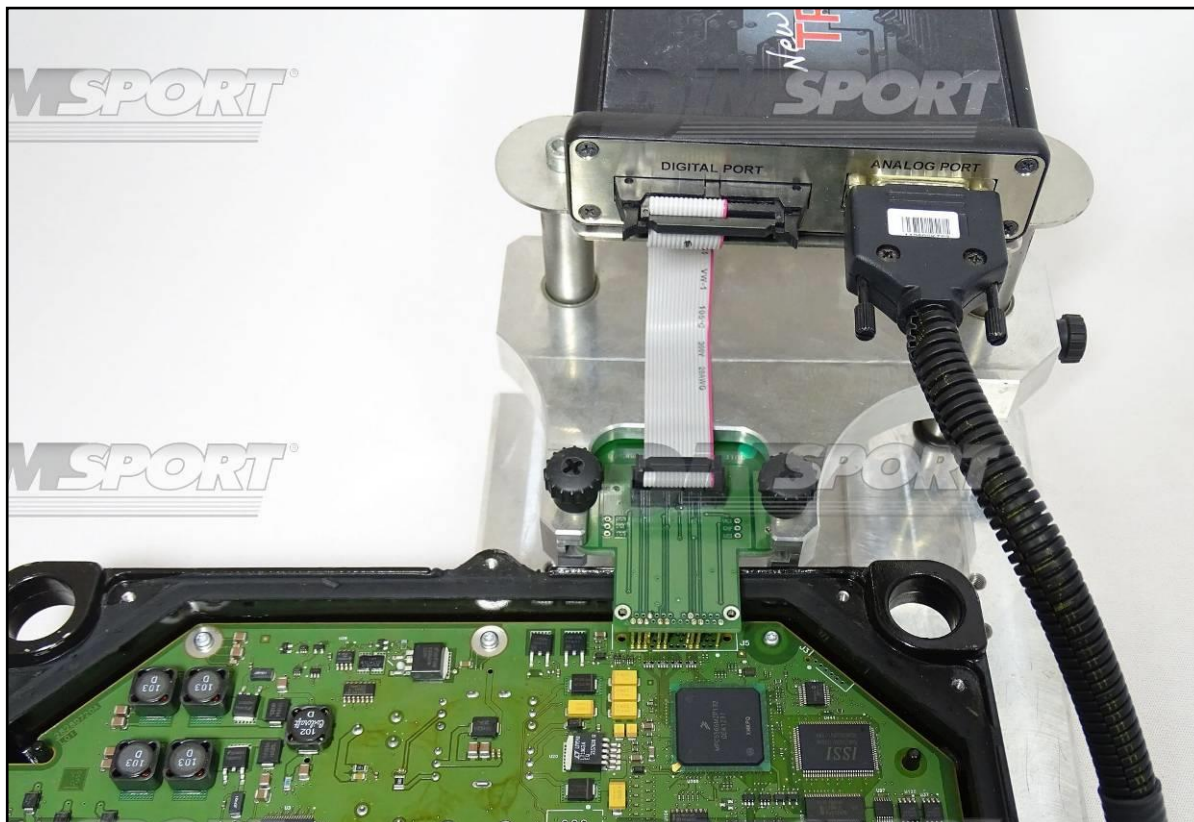


F34DM013 DIMA CONNECTION

The ECU must be powered directly on the ECU connector with the F32GN037C/D wiring.



Place the F34DM013 adapter as shown here below.





WARNING: due to the specific hardware configuration on this ECU it is not possible to write the two serial eproms (eprom). IF you need to program both the serial eproms you must desolder both components and use a chip programmer for such operation.